

**Cloverly PTA
Newsletter**

PAW PRINTS

Volume 1, Issue 1

September 3, 2010

Letter from our PTA President

**PTA GENERAL
MEMBERSHIP MEETINGS
7PM IN THE MEDIA CENTER**

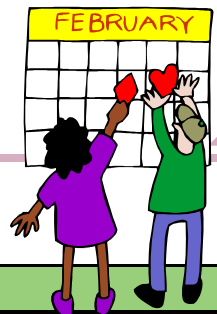
September	7
October	5
November	2
December	7
January	4
February	1
March	1
April	5
May	3
June	7

Welcome back! I hope you enjoyed your summer vacation, and had many wonderful experiences with your children. Many of us on the PTA Board have been working this summer to plan events and services for this 2010-2011 school year and we are excited to put our plans into place. However, PTA programs don't just exist because of the board members, they exist because of YOU.

Your participation is what makes it possible for us to provide amazing programs for our children. This year they will enjoy wonderful Cultural Arts performances; share their curiosity at the Science Fair; enjoy meeting a local Author in Residence; showcase their talents in the Variety Show; and spend time with family and friends at Movie Night, Ice Skating or Bingo. The PTA is here to help support you, your children and the caring and talented staff at Cloverly Elementary.

I look forward to seeing you at our first PTA meeting on Tuesday September 7, 2010 at 7pm in the Media Center. Together we can make this an exciting year. I value your thoughts and ideas and look forward to hearing from you.

Your partner in education,
Hollie Taylor



Calendar of Events

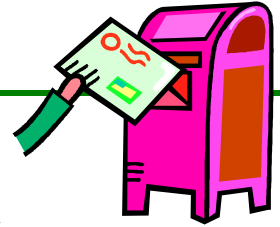
Date	Activity	Time
September 6	NO SCHOOL-Labor Day	
September 7	Instrumental Music Parents Info meeting for Fourth and Fifth Grades PTA Meeting	6:00pm 7:00pm
September 9	NO SCHOOL-Rosh Hashanah	
September 10	Family Movie Night	7:00pm
September 14	MCPS Holiday-Primary Election	
September 15	Back-to-School Night	
	Grades K-2, Autism, PEP	6:00-6:55pm
	Staff Introductions & Presentations	7:00-7:30pm
	Grades 3-5	7:35-8:30pm
September 28	Individual Student Portraits	

*“Children are the
living messages we
send to a time we will
not see.”*

*Neil Postman,
The Disappearance of
Childhood.*



Letter from our Principal



Dear Cloverly Families,

A tap dance, two back flips, and a hand clap to a successful first week at Cloverly! I am ecstatic with the enthusiasm and eagerness of nearly 500 Cloverly students who returned to school ready to learn.

Since August, we've had the following **additional** staff changes:

Mrs. Rexine Harvey, speech and language pathologist, will be serving as a part-time speech and language pathologist at Cannon Road Elementary School.

Mrs. Aliza Mervis will be serving as a part-time speech pathologist.

Mrs. Erin Quinn, paraeducator and CITE intern, will be serving as a second grade teacher at Rosemary Hills Elementary School.

Ms. Jessica Prorok, paraeducator and CITE intern, will be serving as a third grade teacher at Arcola Elementary School.

Mrs. Theresa Moody resigned her position as lunch/recess aide.

Mrs. Theresa Wellens, Mrs. Ellen Roper, and Mrs. Deborah Murphy will be serving as part-time paraeducators and recess aides.

At Cloverly, we strive to maintain a positive and safe environment in which optimal learning can take place. Each student should have received the comprehensive Behavior Management Plan. Please read over its contents and share them with your children. Please sign and return the cover page to your child's teacher as soon as possible.

We believe that the success we have with each child will depend on the cooperative efforts of home and school. The best way that parents can support their children's education is through active participation. We encourage you to become involved in school and PTA activities. Working in partnership, we will effectively maintain the high standards of excellence at Cloverly Elementary School.

Ms. Conley and I look forward to personally greeting each of you at our "Back to School" night on **Wednesday, September 15, 2010**. The schedule is as follows:

- 6:30-7:25 Grades K, 1, & 2 (PEP & Autism)
- 7:30-8:00 Staff Introductions and Presentation
- 8:05-9:00 Grades 3, 4, & 5

The MCPS board of education is holding two public forums to provide parents, staff, students, and community members the opportunity to give their input on important issues affecting Montgomery County Public Schools on October 13 at Carver Educational Services Center (CESC), Auditorium, Rockville and October 28 at Wheaton High School, Silver Spring, 7-9:00 p.m. Participants will discuss the topic, "**What do you value about Montgomery County Public Schools?** MCPS cannot do it all: So, what are the things we cannot do without? What will be needed to improve education in the next 5-10 years, and beyond, in Montgomery County?" If you would like to participate call 301-279-3617, beginning three weeks before the forum. Foreign language interpretation will be available in Spanish, French, Chinese, Korean and Vietnamese. Sign language interpretation can be requested at least one week prior to the event by calling 301-517-5539 or -5582 (Voice/TTY). Childcare also will be available.

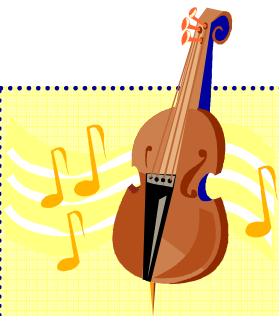
Again, *Welcome Back!* I am thrilled and highly optimistic that the 2010-11 school year to be another exciting time for everyone.

Sincerely,

Ms. Melissa Brunson



Instrumental Music News



All 4th and 5th graders are eligible to participate in the Instrumental Music Program. The students came to the Instrumental Music Portable on Wednesday, September 1 and learned all about the program and how to sign up. They should have come home with a registration packet. Please complete the registration and get it back to me as soon as possible so I can start helping the students decide on an instrument and get the program started for the year.

If you would like more information about the program, I will be holding an Instrumental Music Parents Information Meeting on Tuesday, September 7 at 6pm in the Media Center prior to the first PTA meeting of the year. This meeting is for parents new to the Instrumental Music Program. If you can't make it to the meeting please feel free to contact me at 301-989-5770 or [Tamala S Ripley@mcpsmd.org](mailto:Tamala.S.Ripley@mcpsmd.org).

Thank you.
Tammy Ripley

PTA Fundraiser Connection

Thank you for supporting the first fundraiser of the school year, gift wrap.

Please pick whatever means of support works for your family. Some families participate in all school fundraisers, some get strongly behind one or two, while others donate directly (Direct Appeal) to the PTA. We recognize that there are a lot of fundraisers during the school year and we are open to other ideas for next year. Please know that your support impacts the children of Cloverly everyday. For example, on any given day...

Your kindergartner will practice reading a "Scholastic News" handout as media enrichment...

Our wonderful music teachers will provide instruments to your child to support a music activity...

Your child may stay after school to participate in the after school Science Program in which supplies are provided, and then will ride the activity bus home...

Your child is able to purchase his/her most desired book(s) at the Scholastic Book Fair...

Your child may go to the computer lab, use a school computer and printer using ink provided by your funds...

Ms. Murray will give your child a ribbon and stickers for the activities they complete at Field Day...

Your child will use the maps and globes at school for an assignment...

Your child's entire class will have a great time while on a field trip

The 5th grade recognition ceremony will be a memorable occasion...

You contribute to a gift for a retiring staff member and make them smile...

Thanks to all of your Cloverly PTA contributions through fundraisers, these comments are true **everyday** because of your generosity.

PTA Directory

When you join the PTA, please remember to complete and return the directory form. Only one form will go home to each family. The directory is a valuable resource for contacting other Cloverly families and will only be distributed to PTA members. So, please join the PTA and complete your Directory form today!



Bear Necessities Fundraiser



Cloverly Cubs are Fishing for YOUR Support!

Help our Cloverly Cubs climb higher through our annual gift wrap fundraiser. This year's fundraiser will help support many programs offered at Cloverly Elementary including; afterschool activity bus, artist in residence, afterschool science program, Cloverly care cubs, and funding to assist family programs - like Bingo night setup and prizes, sock hop, movie night, ice skating and so much more.

Start Date: September 3rd

End Date: September 17th

Students will have the opportunity to earn lots of awesome prizes including; an electric scooter, limo lunch ride with Ms. Brunson and many more

Please contact Meredith Holman at (301)384-0745 or email meredith-holman@hotmail.com with any questions. Thank you for your support!



Free Funds for Cloverly (at no additional cost to you!)

Campbell's Labels For Education

We need to submit the UPC code from canned and bagged products, and the lid from bottled products. Send these UPC codes and lids into the school and Cloverly can earn free merchandise. Remember - Campbell's makes more than just soup - Prego sauce, V8 juices and Pepperidge Farm products also earn points for our school. For more details visit labelsforeducation.com

Box Tops For Education

Save Box Tops for Education, send them into school, and Cloverly earns cash! Simply clip labels and put them in a clear, plastic bag (up to 50 per bag). Label the bag with your child's name, teacher's name, and the number of box tops and send them to school. The following are some of the many brands of products you will find have box tops on them: General Mills, Pillsbury, Hefty, Betty Crocker, Cottonelle, Scott, Old El Paso, Hamburger Helper, Bisquick, and NOW ALSO ON ZIPLOC AND KLEENEX! Remember to have your family, friends, neighbors and co-workers to save theirs for you too! Go to boxtops4education.com for more information!

Safeway and Giant School Savings Programs

Our school can earn free cash just by using your grocery store savings cards at any of these merchants. You have to designate Cloverly Elementary as the school you want to benefit from your savings card. You can designate your cards by calling or going to the websites listed below. Remember to get card numbers from family, friends, neighbors and co-workers if they don't have a school to support. Safeway- www.escrip.com (1-800-254-5404) and our school code is 6648251. Giant- www.giantfood.com (1-877-275-2758) and our school code is 00888.

TerraCycle to recycle drink pouches

Staying with the Cloverly Goes Green theme, we have continue to partner up with The Capri Sun, Kool-Aid, and similar drink pouches may be placed in the receptacle in the cafeteria. Families can also collect pouches at home and send them in for recycle. They will be recycled back to TerraCycle, and by doing this, the company donates back to the school. Great for the environment and great for our school!

Send in used inkjet cartridges and cell phones

Send in your used inkjet cartridges and old cell phones to Cloverly. Cloverly will receive money for these used products to be used for school supplies. A box, with paw prints, is set up in the hallway outside of the Front Office to collect these items.

Again, we are participating with several programs that help provide equipment and supplies to our school. This year more than ever, with continuing budget constraints, we ask that you consider participating in our **free fundraising efforts**.

*"The life of a man consists not in seeing visions and in dreaming dreams,
but in active charity and in willing service."
Henry Wadsworth Longfellow*



Joining the PTA...

...makes our school and community stronger!

It's the best way to get to know teachers, staff and other parents. It sets a wonderful example for kids by showing them that education is truly worth our time and energy. When you're part of the PTA, you have a voice and can participate in the decisions that affect your child's education. Signing up for the PTA does NOT mean you have to volunteer (though we always welcome your help!) - it's simply the best way to find out what's happening in your child's classroom. There are many opportunities to join! You can join in person during the first PTA meeting on September 7th, Movie Night on September 10th, or Back to School Night on September 15th. You can also join by filling out the membership form that will be sent home with your child or by accessing the online membership forms at www.cloverlypta.com.

The cost is just \$10 per family and there are lots of extra reasons to join this year.

Sign up by **November 1st** and you'll automatically be entered to win a **\$500 gift card at Target!** If your **entire** class signs up, your teacher will receive a shopping spree at Target, and the class will get a special classroom party. Let's make this the best year ever for **sign ups!**

Congratulations to Joe and Eli Traini who were the lucky winners of a \$100 Target gift card for signing up at Kindergarten Orientation! Don't miss YOUR CHANCE to win a great prize...sign up for Cloverly PTA today!

For more information, contact Amy Creel at creels@verizon.net.

"To be yourself in a world that is constantly trying to make you something else is the greatest accomplishment." Ralph Waldo Emerson



Cloverly PTA Executive Officers

President	Hollie Taylor	301-384-3502	hollie_taylor@yahoo.com
Vice President	Cheryl Minus	301-384-3648	Cheryl_minus@yahoo.com
Treasurer	Janet Bieber	301-384-8755	preciousjwb@verizon.net
Secretary	Janet Beaton	301-384-4973	jbeaton@comcast.net

"Paw Prints" Newsletter

The Paw Prints comes out ten (10) times each school year on the first Friday of the month. It is distributed to all Cloverly School families through the youngest family member or via electronic distribution. For electronic distribution please fill out the form in your child's Friday folder, and return it to the Cloverly Front Office. Be sure to look for the Paw Prints each month as it contains lots of school, PTA, and classroom news, as well as an updated calendar and dates. You can also view the newsletter on-line on the PTA website (www.cloverlypta.com). Submissions to the newsletter can be e-mailed to cloverlynewsletter@yahoo.com. We welcome your submissions, but they must be received by the 20th of the month prior to publication. Submissions after this deadline will be postponed until the next month. Please e-mail any questions or comments to cloverlynewsletter@yahoo.com. Thank you for your continued support!





800 Briggs Chaney Road
Silver Spring, MD 20905

Cloverly Elementary School

www3.mcps.k12.md.us/schools/cloverlyes

www.cloverlypta.com

We Need YOU!

We need to fill leadership positions in the following PTA Committees for the 2010-2011 school year.

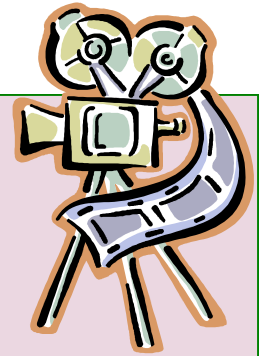
Math Olympiad	Special Needs
Advocacy	Plant Sale
Farquhar MS Rep	Bingo
5 th Grade Recognition	

The following PTA Committees are looking for help:

Gift Wrap	Silent Auction
Spring Fair	Staff Appreciation

For additional information or to volunteer, please contact Hollie Taylor at hollie_taylor@yahoo.com.

Back-to-School Movie



Friday, Sept 10th in the evening. Hold the date because you don't want to miss this tradition! Join us as we celebrate the start of a new school year.

We will watch "Monsters VS Aliens" on our huge movie screen under the stars on our blacktop behind Cloverly Elementary School!!

A flier with all the details will be sent home the first week of school.

Questions – contact Lynette Scaffidi at Lyntte.Scaffidi@comcast.net



Get Connected

We encourage you to join the Cloverly Elementary School listserv e-mail group. Members receive, via e-mail, information about school activities, PTA business, and relevant educational issues. This listserv is administered by the Cloverly PTA; and is not a chat or discussion forum.

Membership is limited to Cloverly Elementary School families and staff. To join, send an e-mail to Cloverlypta_mod@yahoo.com, specifying the e-mail address(es) to be added to the listserv. Also, please provide your name and the names and grades of each of your Cloverly Elementary students.

After the moderator has approved your request, you will receive an e-mail confirming that you've been added to the list. Please allow up to one week for confirmation. If you have been a Cloverlypta listserv member in the past, but have recently changed your e-mail address, please remember to notify the listserv moderator at Cloverlypta_mod@yahoo.com. You may also direct any questions regarding the Cloverly PTA listserv to this address, as well.

We look forward to using this list to keep you informed!



Have a great year!

