

Cloverly PTA

PAW PRINTS

Volume 22, Issue 3

October 29, 2010

Letter from our PTA President

**PTA GENERAL
MEMBERSHIP MEETINGS
7PM IN THE MEDIA CENTER**

September	7
October	5
November	3
December	7
January	4
February	1
March	1
April	5
May	3
June	7

Dear Cloverly Families,

With 2 full months of school completed and so much accomplished it is important to take a moment and give *Thanks*. Staff, students, parents and PTA volunteers have truly been phenomenal. Efforts to support and participate in programs and activities this fall such as fundraising, after school programs, and community service has been outstanding. Staff, coordinators and volunteers have worked very hard, and we are thankful for your tremendous efforts!

This month, we will be building bridges with a group of individuals who greatly contribute to our organization—**those individuals who work in partnership with PTA through their businesses**. Volunteering/donating through matching corporate programs, advertising in PTA publications, and donating supplies to different events...we are truly fortunate to have the support of local businesses in all that we do. Check out the PTA website to see some of the Cloverly community partners. If you have a bridge that you would like to build with a community partner, please let me know. The possibilities of what we can do as a community are endless!

Don't forget to come out to Family Ice Skating Night this month, and be reminded of what a wonderful community we have at Cloverly.

Happy Thanksgiving!

Your Partner in Education,
Hollie Taylor



**“Pretty much
all the honest
truth telling
there is in the
world is done
by children.”**

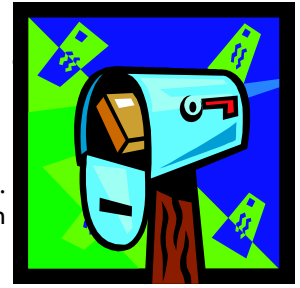
*- Oliver Wendell
Holmes*

Calendar of Events

Date	Event	Time
November 1	NO School - Professional Day	
November 2	NO School - General Election	
November 3	PTA Meeting	7:00 pm
November 10	Individual Picture Retakes	
November 11	Early Release Day - No PEP Classes	12:35 pm
November 12	Early Release Day - No PEP Classes	12:35 pm
November 13	Family Ice Skating Night	6:15 - 8:00 pm
November 24	Early Release - No PEP Classes	12:35 pm
November 25 & 26	NO School - Holiday	



Letter from our Principal



Dear Cloverly Families:

I would like to thank all of the parents for attending *Open House* and *Math Academic Night* last month. We hope you walked away with a variety of activities that will serve as a reinforcement or extension to our instructional program.

As a general rule, I encourage you to contact your child's teacher(s) if there are any issues or concerns. Please be mindful, that the teacher's time is mainly spent on planning and providing instruction. Unless there are extenuating circumstances, teachers respond to inquiries, either by phone or through written communication, within 24-48 hours. If it is an ongoing concern and to avoid a tremendous amount of informal communication, it is advised that you set up a mutually convenient time to meet with the teacher. As a reminder, parent conferences are November 11th and 12th. If you haven't done so already, please contact your child's teacher to set-up a time to meet to discuss your child's performance for Quarter I.

We are very committed to providing a first-class instructional program at Cloverly. As a part of our professional learning community, the Cloverly staff takes advantage of the following training opportunities to promote their professional growth:

Ongoing Professional Development

Continuous improvement through ongoing professional development is paramount at Cloverly. Led mainly by our reading specialist and staff development teacher, our monthly staff training meetings focus on targeted educational strategies that support the teaching and learning process. This year, we are continuing to study diversity and its impact on student achievement and critical thinking using Promethean technology.

Chat and Chews

Ongoing, close monitoring of student achievement data in order to know what is working for individual students take place during bimonthly Chat and Chew meetings. Each grade level meets for approximately one hour with the involvement of the reading specialist, staff development specialist, instructional data assistant, and counselor to analyze and determine strategies needed to adapt instruction and to regroup students for remediation or acceleration as necessary. This meeting has also been established as a time for teachers to plan, receive staff development, and discuss students in danger of meeting academic benchmarks.

Collaborative Problem-Solving (CPS)

Teachers work individually or with their teams to identify and monitor specific interventions for students who are in danger of meeting academic benchmarks. These meetings may also involve school administration, reading specialist, school psychologist, occupational therapist, physical therapist, ESOL teachers, and special education resource teacher as needed. As a result of these meetings, students are recommended for research-based intervention programs like SOAR, for reading comprehension, or Fast Math for math computation. Parents are notified if their child is being involved in CPS.

System-Wide Professional Development

Ongoing professional development is provided to all staff (i.e. teachers, support staff, and school administrators) throughout Montgomery County Public Schools. Some trainings/meetings are required. Ongoing training continues to take place at the local school level.

Training to Support New Teachers

Teachers new to teaching and experienced teachers new to MCPS are required to go to new teacher training over the summer or at the beginning of the school year. New teachers are assigned a mentor or consulting teacher in addition to the support provided by their teammates, colleagues, staff development teacher, and school administration. There are additional courses like *The Skillful Teacher* that is offered to new and experienced MCPS teachers. Many of our teachers have taken this course.



Letter from our Principal (cont'd)

Several of our teachers take advantage of college/university course offerings and attend statewide conferences to promote their professional growth. For example, Ms. Robin Shaffer, fourth grade teacher, is working on her Master's Degree in Special Education.

We are committed to providing accelerated instruction and opportunities that promote critical thinking. To date, all of our general teachers have been trained and are implementing the William and Mary Program (grades 3-5), Junior Great Books (grades K-5), and Jacob's Ladder (grades 3-5) for the delivery of effective, enhanced reading instruction. At each grade level, we have at least one class of students receiving above grade level math instruction. We continue to engage in ongoing trainings that focus on the infusion of critical thinking and Promethean technology in all subject areas.

Our staff goes "above and beyond" the call of duty to ensure that all students receive a well-rounded education. In addition to initiatives that were started last year, we continue to implement the *Mentoring Support* program. Selected students receive mentoring support from assigned staff persons. Parents must give permission for their children to participate. Ms. Carol Elliott, our school counselor, oversees this program.

As a result of all of the professional development and the collaboration of parents and teachers working together, we continue to maintain an outstanding instructional program for our students.

Sincerely,

Melissa Brunson

"Education is the ability to listen to almost anything without losing your temper or your self-confidence."

-Robert Frost



Don't miss this Cloverly Tradition!!
Ice Skating
At Wheaton Regional Ice Rink
Exclusively for our Cloverly families!!
November 13, 2010
7 - 9 PM
Admission \$5.00 per person

Cloverly students, teachers and family members are invited to attend this exciting event.
Children must be accompanied by an adult for the duration of the event.

All attending must purchase tickets in advance.

Return completed form (in Friday Folders) and money to school no later than Monday, November 8.

Skate rentals are available at the rink for an additional charge of \$3.25 per person. By purchasing tickets, the buyer is accepting responsibility for all minors in his/her party. The Cloverly PTA reserves the right to revoke skating privileges from any participant whose conduct is deemed inappropriate for an elementary school function.

Questions...contact Beth at brkonzmann@verizon.net



...It's the **EASIEST FUNDRAISER** ever....

Please remember to log onto eScrip.com and giantfood.com/aplus to sign up or renew your Safeway Club Card and Giant Card. Then all you need to do is shop at Safeway or Giant and use your card. Then Cloverly PTA will be awarded money....it's that simple!



For more information, please contact ellenroper@hotmail.com. (Our Giant ID # is 00888)

Scrip Gift Cards



The holidays are quickly approaching, and followed by winter break. Treat your family out for shopping, movies, or ice cream by purchasing gift cards. Friends and family members will also love these as gifts. Simply fill out an order form, send it in with your child, and have your gift card within a week. It's as simple as that! With such a large selection to choose from, why bother with the crowded stores.

Look for Scrip gift card flyers in backpacks over the next few weeks.

For more information contact Margaret Persaud at (301) 476-8156.

Holiday Greenery Sale



Looking forward to decorating for the holidays?

Purchase wreaths, garlands, blooming plants, and much more while supporting the PTA during the Annual PTA Holiday Greenery Sale.

Order forms will be distributed in the next few weeks, and items will be available for pick-up the first week of December.

If you are interested in assisting with the sales, please contact coordinator Hollie Taylor at 301-384-3502/ hol-

Childcare during PTA Meetings!

To reserve a space for your child for childcare for this month's meeting, please contact Jackie Stock by 7pm the evening before the meeting, so that there are enough caregivers on hand for the children present.

Children must be out of diapers (3 or above) and although some quiet activities will be available, parents are encouraged to have their children bring additional toys and activities. Parents may provide a nut-free snack, but otherwise, food will not be available.

Questions? Feel free to contact Jackie at 301-384-8315 / jackie.stock@jhuapl.edu for more information.



*** Paw Prints Newsletter ***

Paw Prints is a monthly publication of the Cloverly Elementary School PTA. Submission must be received by the 20th of each month.

Submissions should be emailed to the Newsletter Committee at newsletter@cloverlypta.com.





800 Briggs Chaney Road
Silver Spring, MD 20905

Cloverly Elementary School

www3.mcps.k12.md.us/schools/cloverlyes

www.cloverlypta.com

Bear Necessities Believe Kids Fundraiser

Page 5

A big thank you to all the families that helped support this years gift-wrap fundraiser.

Cloverly Elementary was able to raise over \$6600.

ANNOUNCING OUR CONTEST WINNERS...

The class with the highest participation was Mrs. Walkers class. Her class enjoyed a pizza party lunch in October.
Winner of the fish bowl filled with Swedish Fish was Blake Stallings with a guess of 755 fish.

The winners of the limo lunch ride with Ms. Brunson were:

Sean Bryant
Jacob Moser
Shane Cushman
Mason Minus
Hailey Clifford
Patrick Bieber
Elizabeth Dolan
Emily DiPasquale
Riley Bushman

A big thank you to Chick Fil-A on Tech Road in Silver Spring.
They provided lunch for all the limo lunch winners.

Grand prize winner of the electric scooter was Logan Zarchin.

Orders will be available for ***pick-up during parent teacher conference's on November 11th and 12th*** in the teachers lounge.
Look for additional details in your child's Friday folder.

CLOVERLY SPIRITWEAR

Order Deadline is November 22!

Is your Cloverly cub wanting to show school spirit? We have a new look this year and something for every Cloverly Cub and their family members! Order your Cloverly Spiritwear by November 22nd to receive it on December 17th just in time for the holiday season!! Short sleeve and long sleeve t-shirts, crew neck, hoodie and zip sweatshirts, polo shirts, sweat pants, shorts and more. New designs for t-shirts, as well as new bags on hand! Show that Cloverly pride and purchase your apparel today.

Ordering is simple:

- 1) Go on-line to view the selection and place your order at www.bamconsultingllc.com
- 2) Enter username: CES and password: cubs

Don't forget to purchase the Cloverly Car Magnet(\$5)also! Just make a note on your order form to include the magnet.

Please be sure to click the SHIP TO SCHOOL OPTION and your shipping will be free!

If you want the items to be a surprise for your Cub, just indicate that on the form.

If you have any questions, please contact Tracy Kiras at tkiras@umd.edu

Happy Thanksgiving!

