

**Cloverly  
PTA**

# PAW PRINTS

## Letter from our PTA President

**PTA GENERAL  
MEMBERSHIP MEETINGS  
7PM IN THE MEDIA CENTER**

<b>January</b>	<b>4</b>
<b>February</b>	<b>1</b>
<b>March</b>	<b>1</b>
<b>April</b>	<b>5</b>
<b>May</b>	<b>3</b>
<b>June</b>	<b>7</b>

Dear Cloverly Families,

The pace at Cloverly continues to be fast and fun! Thank you to all committee chairs for their tireless efforts in organizing some of the most popular programs the PTA offers. We hope you and your children enjoy these enrichment opportunities.

The PTA is kicking off February with the so loved "BINGO NIGHT". We look forward to seeing you at Briggs Chaney Middle School for a fun evening with other students, staff, and families. In addition to Bingo, some of Cloverly's rising stars will be on stage this month at the "Variety Show" on Friday, February 25<sup>th</sup> at 7:00 p.m. If you have not yet seen this production, you are in for a treat! Don't forget to wear your green and white Spirit Wear and bring a few tissues - it is very moving. We have all been moved in some way, by some of the world situation, so it will be heartwarming to see the support in our community at these events.

Presently, the Nominating Committee is gathering PTA Officer nominations for the 2011 school year. Nominations will be accepted through the end of February, so there is still time to submit yourself or a friend as a nominee for the Executive Committee. We encourage all parents to give strong consideration to serving on the Executive Board or PTA Board. If you have an interest in a particular PTA activity, consider donating your time as committee member. All nominations should be sent to Janet Beaton, PTA Secretary.

During this month please take time to remember that your strong parental involvement and volunteerism remains vital to the success of our school. As Valentine's Day draws near, may your heart and those of our children be filled with love.

Your Partner in Education,  
Hollie Taylor



"One hundred years from now it will not matter what kind of car I drove, what kind of house I lived in, how much money I had in my bank account, nor what my clothes looked like. But the world may be a little better because I was important in the life of a child."

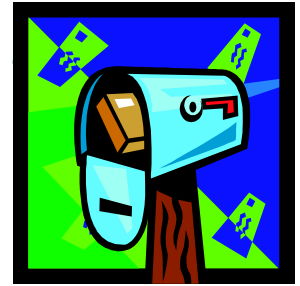
- anon

## Calendar of Events

Date	Event	Time
February 1	PTA Meeting	7:00 pm
February 2	Report Card Distribution	
February 4	Bingo Night @ BCMS	7:00-9:00 pm
February 11	Career Day Grades 1st-5th	9:00-11:00 am
February 14	Valentine's Day Parties	2:00 pm
February 21	No School-President's Day	
February 23	Club/Group Pictures	
February 25	SGA Spirit Day—Crazy Hats Variety Show @ Olney Theatre	6:00-9:00 pm



# Letter from our Principal



Dear Cloverly Parents and Guardians,

It's hard to believe that we are mid-way through the school year. I am proud that our students continue to show lots of growth, both academically and socially, and are extremely motivated and energized to finish off the year with much success. Report cards will be distributed on Wednesday, February 2<sup>nd</sup>. Review your child's report card with your child and if there are any questions and/or concerns, confer with your child's teacher.

On behalf of the entire staff, we thank the PTA and all of the parents who contributed to the soup and bread luncheon last month. It was wonderful to celebrate the end of the 1<sup>st</sup> semester and welcome the new beginnings of the 2<sup>nd</sup> semester.

Cloverly students in grades K-5 will be participating in Career Day festivities on Friday, February 11<sup>th</sup>. This year's theme is *Discover and Dream*. Our school counselor, Ms. Carol Elliott, and parent, Dr. Karen O'Brien will be spearheading this inspiring event. Ms. Nancy Navarro, Montgomery County council member of District 4, will be guest speaker this year for grades 3-5. Please see the excerpt located in this month's Paw Prints for further details.

Cloverly students will also be celebrating Valentine's Day on Monday, February 14<sup>th</sup>, with parties beginning at 2:00 p.m. Exchanging of valentines is a fun, but voluntary, activity. However, if your child chooses to send valentines, please make sure there is one for every student in the class. Also, be mindful of students with severe food allergies, particularly foods containing nuts. Only store bought foods with labels can be shared with students. We will be following the same procedures as we did for the Halloween parties where food was brought to the AP room for a label check on the day of the party. Cut-up fruit is allowed; however, we prefer that you send in manufactured pre-cut, pre-packaged fruit.

During the months of December and January, we have been experiencing frigid temperatures of 32 degrees and below with substantial wind chill factors in the teens and single digits. In order to protect the health and wellness of our students, we have limited outdoor activity and held indoor recess most of the time. Join us as we encourage students to dress warmly with winter gear on such as coats, gloves/mittens, and scarves.

**Reminder!** Our school day begins at 8:50 a.m. Students arriving after 8:50 a.m. are considered tardy and will be marked as tardy. Letters will be going out to those families whose children have been excessively late and/or absent.

**Reminder!** The Maryland Schools Assessment (MSA) will be administered to all 3<sup>rd</sup>, 4<sup>th</sup>, and 5<sup>th</sup> grade students during March 7-23<sup>rd</sup>. The Terra Nova (TN/2) will be administered to all 2<sup>nd</sup> grade students between April 4<sup>th</sup> and April 8<sup>th</sup>. The Science MSA will be administered to all 5<sup>th</sup> grade students between April 11<sup>th</sup> and April 15<sup>th</sup>. It is important for all students to be present during the administration of these tests. Please do not schedule vacations or make appointments for your children on these important dates.

Sincerely,

Ms. Melissa Brunson, Principal

Ms. Carrie Conley, Assistant Principal



## \*\*\* REMINDER\*\*\*

# Bingo Night

THIS Friday, February 4, 2011 from 7 – 9 pm at Briggs Chaney Middle School.

Make sure you have your tickets so you don't miss the fun!

Prizes, snack and 10 bingo games – all for just \$5 a ticket.

A small door prize for all the kids when they leave so that everyone walks away a winner!!

For additional information, contact Cheryl Minus at [cheryl\\_minus@yahoo.com](mailto:cheryl_minus@yahoo.com) or [hollie\\_taylor@yahoo.com](mailto:hollie_taylor@yahoo.com).



## PTA Elections!!

It is time for us to start thinking about who will be our

**PTA officers for the 2011-2012 year!**

If you are interested in running for a leadership position for the coming school year, please contact Janet Beaton at

[janetbeaton@verizon.net](mailto:janetbeaton@verizon.net) for more information.

## CLOVERLY IN-SCHOOL BANKING PROGRAM RETURNS ON WEDNESDAYS!

The Cloverly/Sandy Spring Bank In-School Banking Program is back! This program gives students the opportunity to open a "Young Savers" account and participate in a savings program at the school. It aims to reinforce basic math skills, give children a sense of responsibility in handling money and emphasizes the importance of saving.



Banking days will now be on  
**EVERY OTHER WEDNESDAY** on  
Feb 9... Feb 23... Mar 9... Mar 23...  
Apr 6... May 4... May 18... June 1!!

Each banking Wednesday, a representative from Sandy Spring Bank will be in the Media Center from 8:30 - 8:45 AM for teachers, staff, account custodians, and parents/guardians accompanying students. Students will then be invited to the media center for In-School Banking during morning announcements.

To open a "Young Savers" account for your child, please download the information sheet/application from the Cloverly PTA website or contact chairperson, Renee Chen, at [davidandreenechen@yahoo.com](mailto:davidandreenechen@yahoo.com). Send the completed form and initial deposit with your child to school on a Banking Day Wednesday and have them bring it to the media center.

The minimum opening deposit is \$10.00 with a \$0.50 minimum deposit thereafter. All students who open accounts will receive a Sandy Dog's Savings Club kit containing deposit slips, coin holders, and a Sandy Dog's Savings Club Savings Passbook. Students with existing accounts can start bringing deposits for those same accounts.

Once completed applications are received by the bank representative, account custodians will receive a "signature card" in the mail. The signature card needs to be signed and sent back to Sandy Spring Bank as soon as possible in the postage paid envelope provided. Until the signature card is received, all deposits are held at the bank in a safe. The bank will officially open the account, and deposits will begin earning interest once the signature card is received.

General questions about In-School Banking at Cloverly can be directed to Renee Chen at [davidandreenechen@yahoo.com](mailto:davidandreenechen@yahoo.com). Questions regarding individual accounts should be directed to Sandy Spring Bank at 301-774-6400.

## Discover and Dream... Career Day

On February 11, 2011 the students at Cloverly will be learning about careers at our Discover and Dream Career Day. The students will be discovering the world of work and how it relates to their interests and their education. The students will gather for an assembly with a motivational speaker, Council member Nancy Navarro, and then will be able to hear three speakers share information about their careers.

Speakers from our parent and local community have been selected to represent a wide variety of careers. We will hear from an aerospace engineer, a biologist, an orthodontist, a geochemist, a firefighter, an animal trainer, a police officer, an orthodontist, a fitness expert, a doctor, an aviator, a psychologist, a conservationist, a chef, and more.

Be on the lookout for some homework that the students will be bringing home the week prior to Career Day. This will provide them with an opportunity to learn more about your career, how you chose it, how you prepared for it, and what you like about it. We can all work together to help students identify their interests and make the connection between working hard in school today and career opportunities in the future.

Carol Elliott  
School Counselor



# Variety Show!!

**Attention all budding actors, actress, singers, musicians, and comedians ...  
(and of course any other type of act)**

The Cloverly Elementary Variety Show is coming!

Make sure everyone has had a parent or guardian sign a variety show permission form.



Look for your first run notifications in your e-mail and child's backpack.

If you should need an additional forms please  
e-mail [colleensuv@comcast.net](mailto:colleensuv@comcast.net) or call 240-293-6015.

Looking forward to seeing you under the lights!!

## SPRING FAIR - June 5, 2011!!!



**Cloverly Elementary's biennial Spring Fair is back and better than ever! This is the PTA's largest fundraiser so we are seeking LOTS of volunteers and donations to help with this delightful event.**

**In addition to the carnival, silent auction, live performances, used book sale, and food sales, we have added a multi-family yard sale and freecycle area that we hope will enable us reach out to the Cloverly community and encourage more participants. The Cloverly Cubs Care Club will also provide an opportunity to donate used furniture to benefit "A Wider Circle", a local organization provides beds, dressers, and other basic need items to families that are moving out of shelters or living in neglected neighborhoods.**

**Concerns were raised in years past about kids having nothing to do during Silent Auction check-out. The Spring Fair committee is responding to this by ending the Silent Auction an hour early. The carnival and D.J. will then be available then entertain the kids while parents pick up their auction winnings.**

**Silent Auction volunteers especially need help, so please save your unwanted holiday gifts, baskets & containers, new or like-new household items, toys, books, pictures, etc. to donate to the auction. Start thinking creatively about what you can donate- do you sew, make cakes, have extra tickets to a sporting event? These are all great ways to donate to our auction.**

**We need to gather great ideas, silent auction items, company sponsors, and most of all,  
VOLUNTEERS!!!**

**Please e-mail Susan Quinn [cojana@verizon.net](mailto:cojana@verizon.net), Nicole Gyapong [NICOLE.GYAPONG@Inf.com](mailto:NICOLE.GYAPONG@Inf.com),  
or Renee Chen [davidandreenechen@yahoo.com](mailto:davidandreenechen@yahoo.com) if you would like to help.**





800 Briggs Chaney Road  
Silver Spring, MD 20905

**Cloverly Elementary School**

[www3.mcps.k12.md.us/schools/cloverlyes](http://www3.mcps.k12.md.us/schools/cloverlyes)

[www.cloverlypta.com](http://www.cloverlypta.com)

The 2011 Science Fair will be held on Thursday, May 12, 2011.

The goal of the science fair is to get students

**excited about science!**

All grades can participate.

More information will be coming home in March.

The Science Fair Committee is looking for a parent volunteer to co-chair the committee this year. The co-chair would work along side of me, Mary Goodenough, to learn about how the Cloverly Science Fair is organized and implemented. I have a 5th grader this year and will be moving on to be a Middle School Parent next year. My goal is to help transition a new volunteer into this role.

If you are interested please contact me via e-mail at [mary\\_goodenough@merck.com](mailto:mary_goodenough@merck.com).



**DID YOU KNOW...**

**ALL** volunteers must watch a short tutorial video

on how to use the school's copy machine prior to using it!

Please plan to attend a short class on Feb. 9th from 10:15-11 a.m.

For more info, please contact Robin Boyer at [rlfboyer@verizon.net](mailto:rlfboyer@verizon.net).

## Volunteers Needed

Hearing and Vision Screening will be held on Feb. 7th from 9-12 and 12:30 -2:30.

Montgomery County tests all Kindergarteners and 1st graders, any child new to MCPS and any child recommended by the teacher. Your duties would be to escort the children to and from the testing room. Rescreening is March 8th.

Any time you can give would be great!  
Please contact Robin Boyer at [rlfboyer@verizon.net](mailto:rlfboyer@verizon.net).

## **BOXTOPS for Education**

The **next drawing** will be held during the Valentine's parties on **February 14<sup>th</sup>!**

The last day to submit Boxtops in order to be eligible for the drawing is Wednesday, February 9<sup>th</sup>.

Everyone who submits at least one Boxtop coupon will be eligible for the drawing. Keep clipping and collecting – there will be one more submission at the end of the school year!

The student that collects the most (for the whole school year) will receive a prize and the class that collects the most (for the whole school year) will get a **Popsicle party!**

